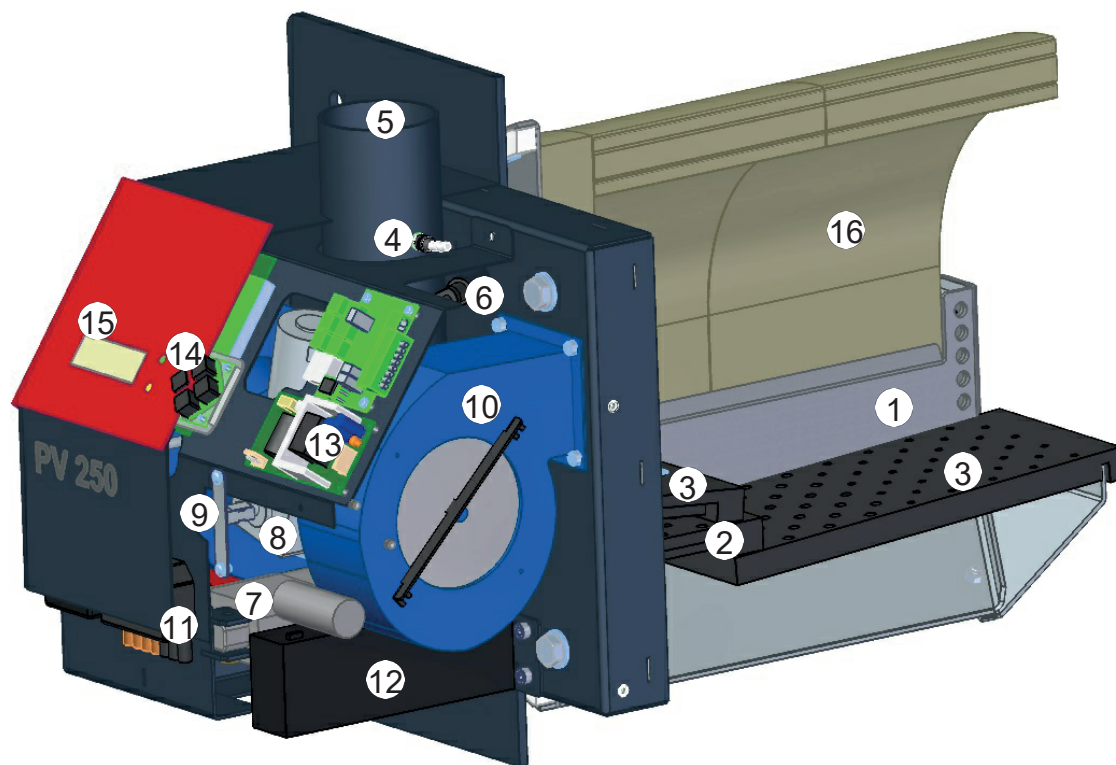


# NEW! Automatic pellet burner PV 250



- |                       |                           |
|-----------------------|---------------------------|
| 1. Burning chamber    | 9. Primary fan            |
| 2. Moving grate       | 10. Secondary fan         |
| 3. Grate              | 11. Plugs                 |
| 4. Fuel level sensors | 12. Backup battery        |
| 5. Fuel inlet         | 13. Bower supply          |
| 6. Flame sensor       | 14. Keyboard              |
| 7. Grate moving motor | 15. Display               |
| 8. Feed screw motor   | 16. Burning chamber tiles |

- Ceramic ignitor
- Automatic ash removal
- Durable burning chamber refractory tiles
- Burns industrial quality pellets
- Integrated draft sensor & internet module
- Replaceable burning chamber components
- Backup battery
- Lambda probe ready

The new PV 250 burner is very good to use with medium power systems from 70 kW with peak of 250kW. Like all industrial burners, PV 250 has mechanical grate cleaning system. This ensures perfect burning quality and a long service interval. The burner has a very compact design with all the components easy to maintain. Burners unique electrical ignition, automatic output level choice and informative display make using this burner easy and comfortable all year round.

Pelltech OÜ is active in pellet burner field since 2005 and today we are the biggest pellet burner manufacturer in Baltic countries. Pelltech engineers and produces pellet burners in capacity range from 20kW to 1,5 MW.

Wood pellets are biomass products: natural, environmentally friendly, renewable fuel resource made from sawdust. The quantities of carbon dioxide from combustion are equal to the quantity the tree uses when it grows.

### Efficiency

- **Lower power consumption**
- Burning efficiency **99%**
- **Hold flame option:** gives a possibility to hold small flame in burning chamber and saves energy by avoiding several ignitions
- Integrated **draft monitoring system** with the control of the flue gas fan
- **Lambda** sensor ready

### Burning quality

- **Two separate fans** for primary and secondary air improve burning quality, especially at lower power levels
- **Single point fast ignition:** all ignition energy is concentrated to one point for fast and fumeless ignition with high temperature ceramic ignitor
- **Dosing with internal auger** assures unvaried fuel transportation into the burning chamber and therefore also even burning
- **Fan speed control** regulates and measures both fans rotations to assure exact air distribution in all output levels
- **Intelligent modulating output:** the burner chooses required output level according to need of heat
- Using a **hot burning chamber** insures absolute burning, small emissions and high efficiency

### Safety

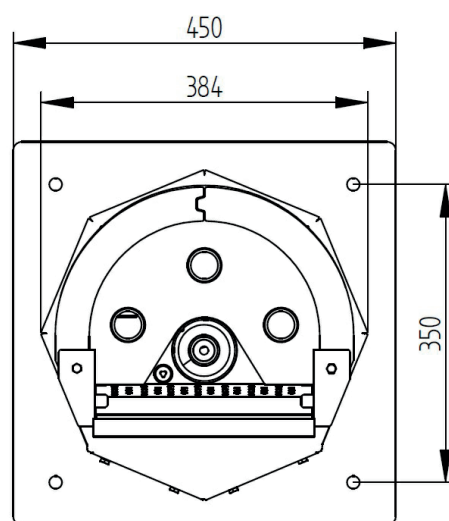
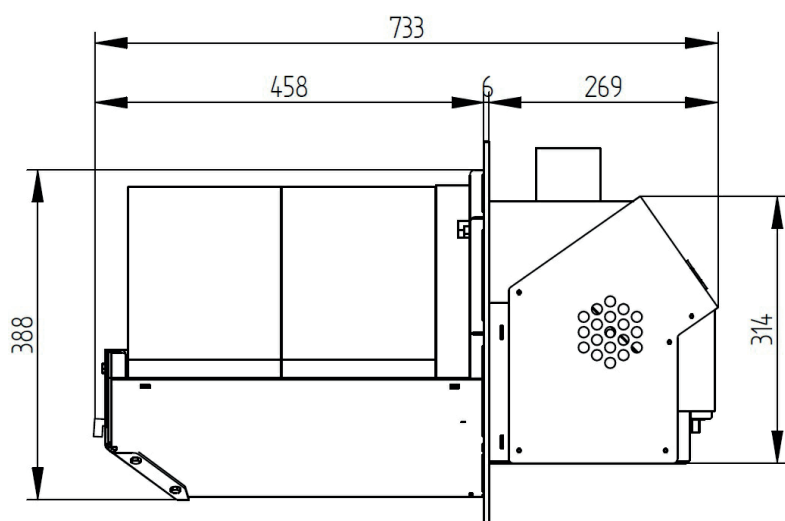
#### Protection against back burning:

#### Safety thermostat

- Periodic work of **internal auger** in standby mode
- **Melting hose**
- **Backup battery** insures that in case of power interruption the burner cleans up to avoid backburning
- Integrated **draft sensor** will stop the burner in case of overpressure in burning chamber
- **Error output relay:** in case any external device is connected relay switches it on/off in case of burner error

### User friendliness

- **Interface:** the burner gives clear information about the current state and shows set up parameters on the screen
- **Fuel level control:** because of the dosing internal fuel amount, it is not necessary to measure the productivity of external auger or to fill the auger manually after the burner runs out of fuel
- **Automatic ash removal:** periodically cleans burning chamber
- Replaceable burning chamber components. Possible to change single part of the burning chamber, rather than whole burning chamber, reducing maintenance costs
- It is possible to add temperature sensor of boiler

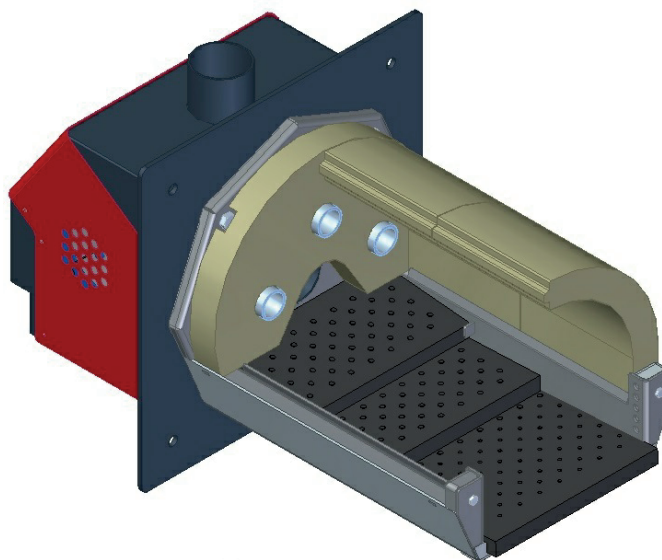


## PV 250

Capacity: 70 – 250 kW  
Power levels: 6(11)  
Fuel: Wood pellets 6-8mm  
Ash content: up to 3%

Igniton: Electrical, 250W  
Power supply: 230V, 50 Hz, 10A  
Ash removing: Automatic

Noise level: 63 dB  
O: 5 – 8%  
CO: 50 – 150 ppm  
Flue gas fan: up to 0,75kW, 230V



#### Manufacturer:

**Pelltech OÜ**

Sära tee 3, Peetri 75312  
Rae vald, Estonia

[www.pelltech.eu](http://www.pelltech.eu)  
[info@pelltech.eu](mailto:info@pelltech.eu)

tel. +372 6775277

#### Reseller: